

Specifications

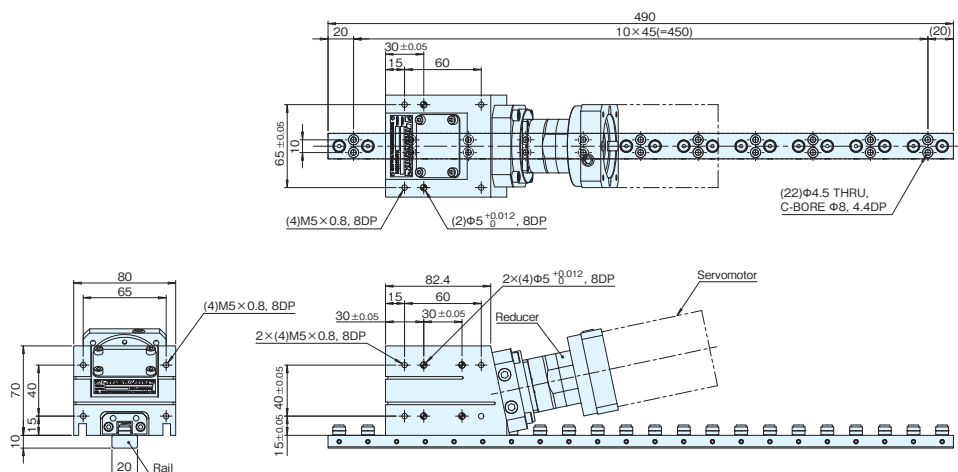
Item	Units	CS10	CS16	CS22	CS30	CS40	
Lead	mm	90	50	70	90	110	
Transmission accuracy (*1)	μm	30/300mm					
Repeatability (*1)	μm	± 20 (± 10 : without reducer)					
Allowable loading capacity	N	200	500	750	1000	5000	
Screw's moment of inertia	$\text{X}10^{-4} \text{kg}\cdot\text{m}^2$	1.5	3	8	64	162.1	
Mass	Liner	kg	1.5	3	7	15	30
	Rail (Steel)		0.8 (L=490)	1.5 (L=495)	2.5 (L=485)	5 (L=535)	13 (L=765)
	Rail (Aluminum)		0.4 (L=490)	0.9 (L=495)	1.2 (L=485)	2.6 (L=535)	—
	Reducer		0.6	1.4	1.4	3.7	8
Standard rail length	mm	490	495	485	535	765	
Surface treatment	Liner	Anodized black					
	Rail	Steel/black oxide		Aluminum/anodized black			
Lubrication oil		Mobilgear 600 XP 320					

*1 Accuracy readings are based on internal test bench results (20°C)

*2 Excluding mass of servomotor.

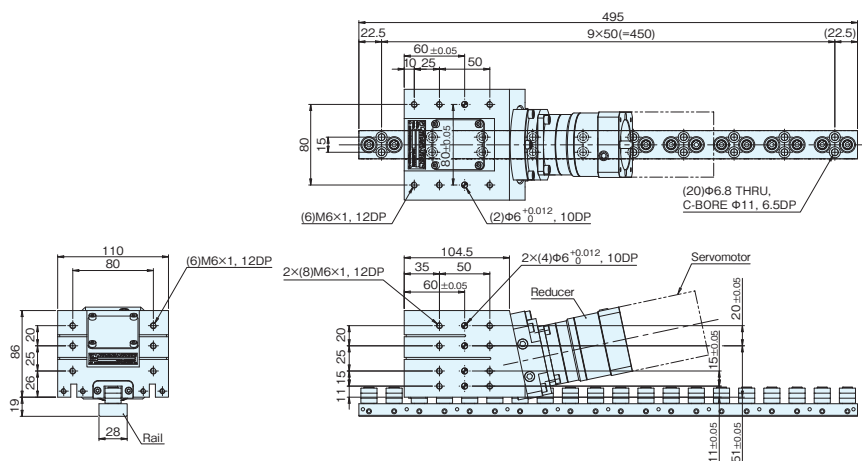
Dimension Drawings: Component Specification

CS10



* Usable stroke of only one rail is 395 mm. *2 Please procure a servomotor and linear guide.

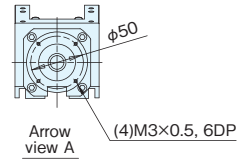
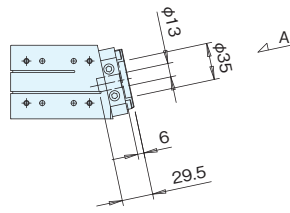
CS16



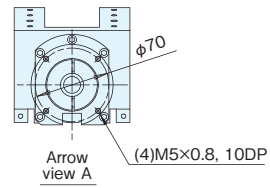
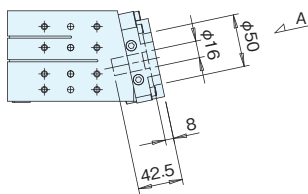
* Usable stroke of only one rail is 375 mm. *2 Please procure a servomotor and linear guide.

Dimension Drawings: Reducer Installation Area

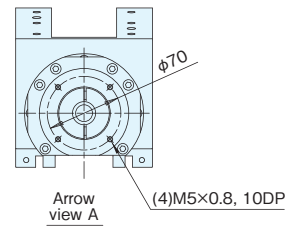
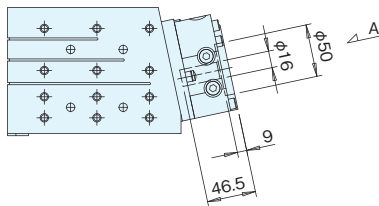
CS10



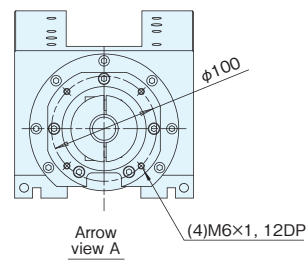
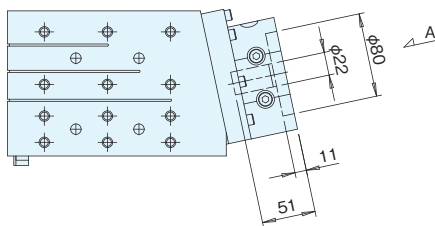
CS16



CS22



CS30



CS40

