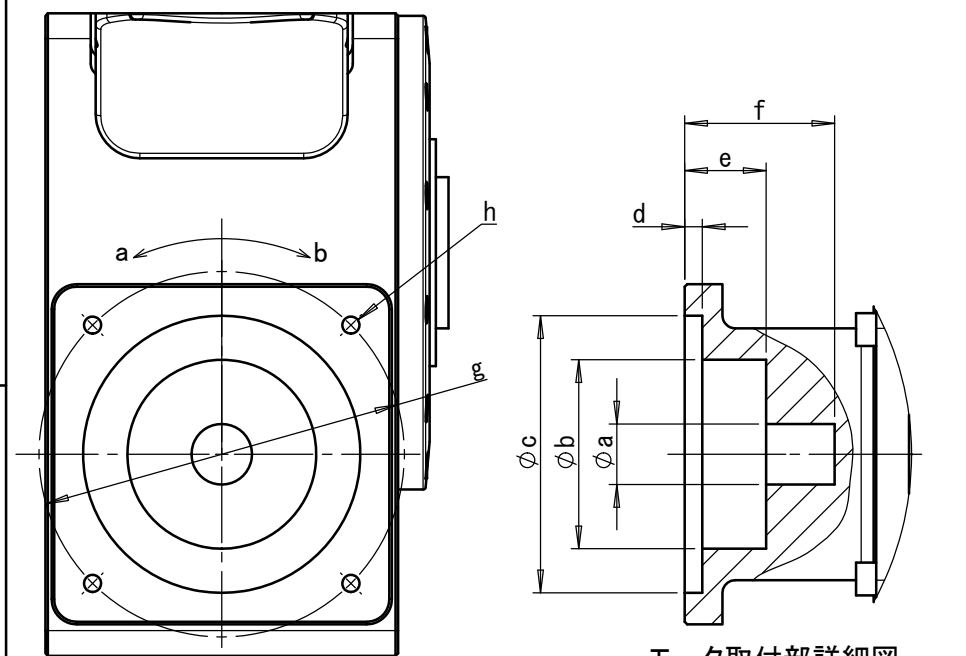
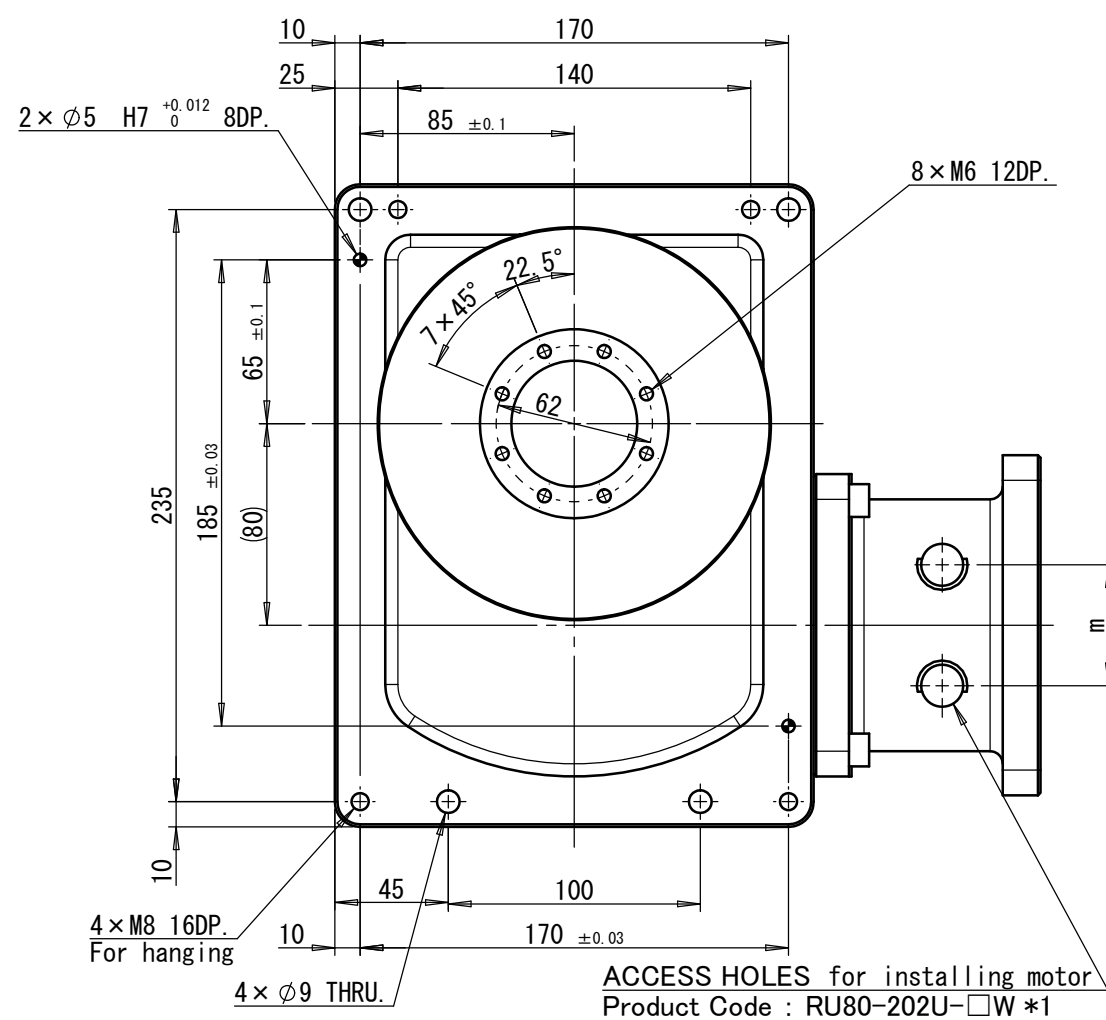
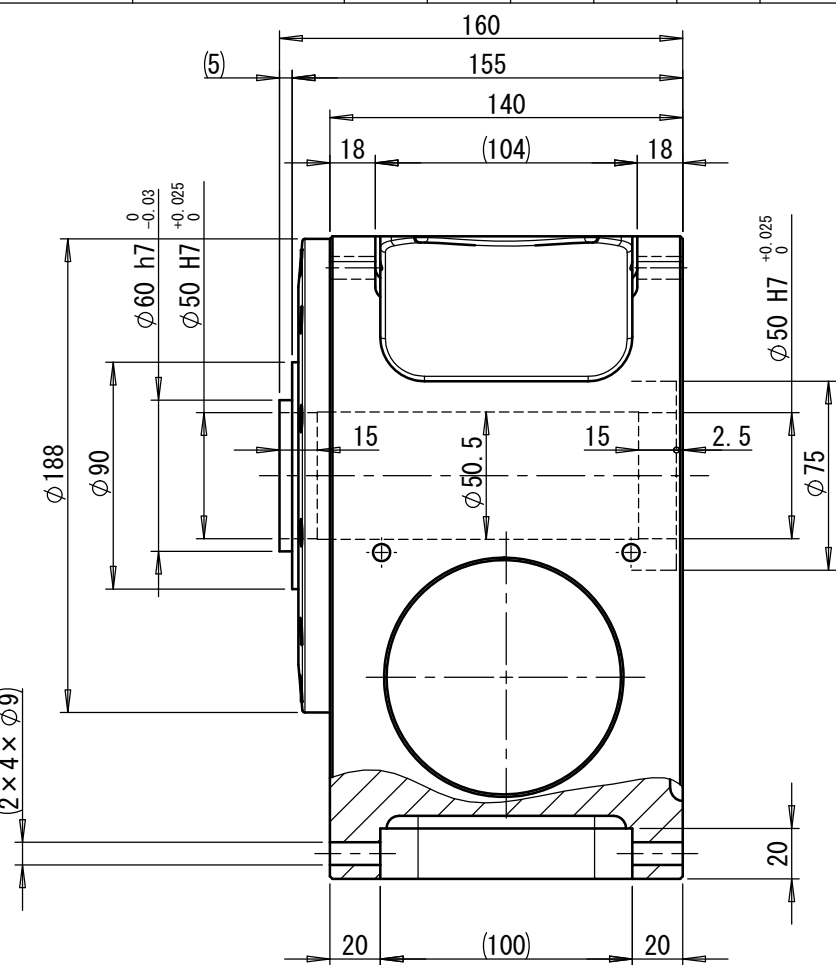
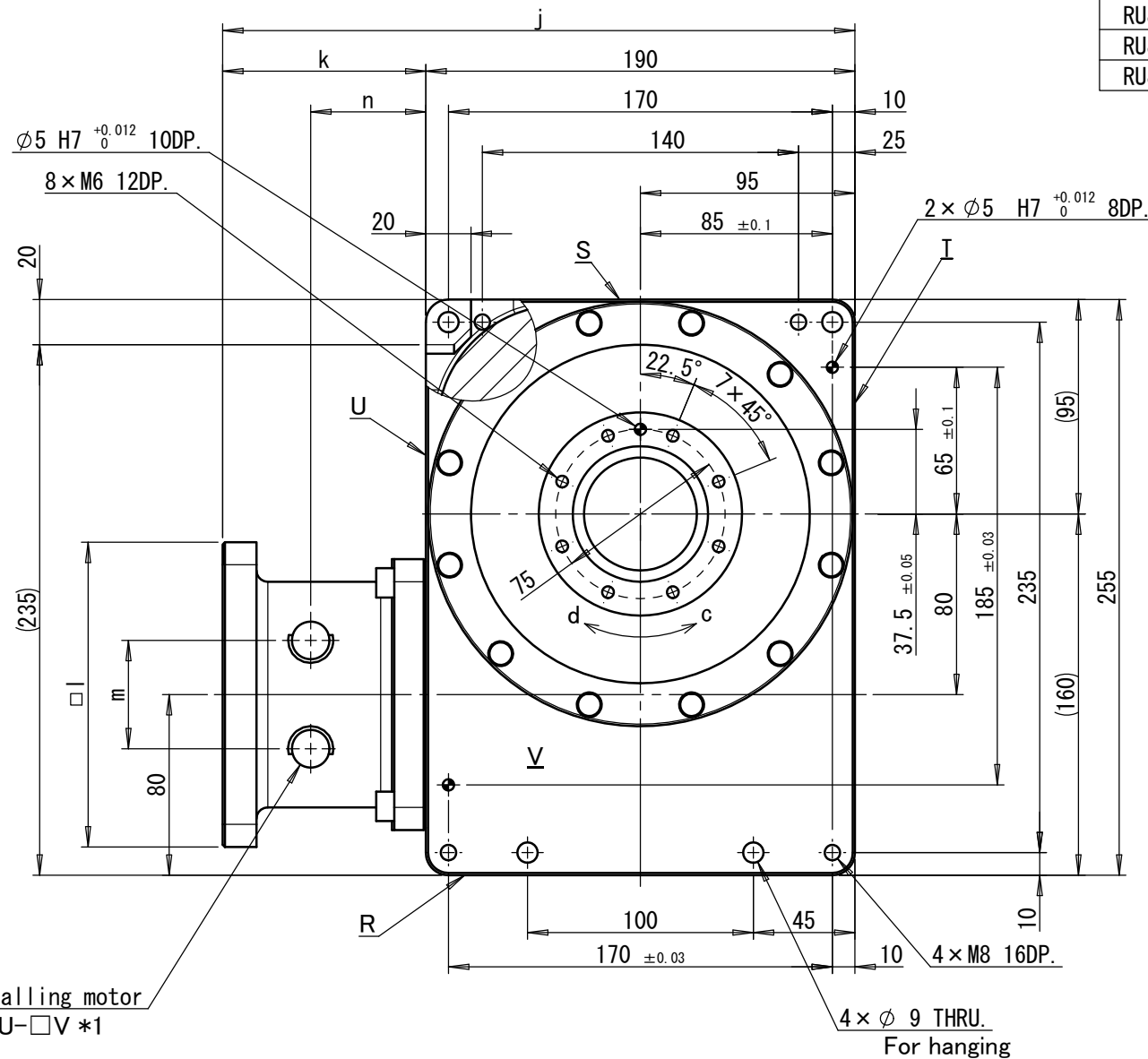


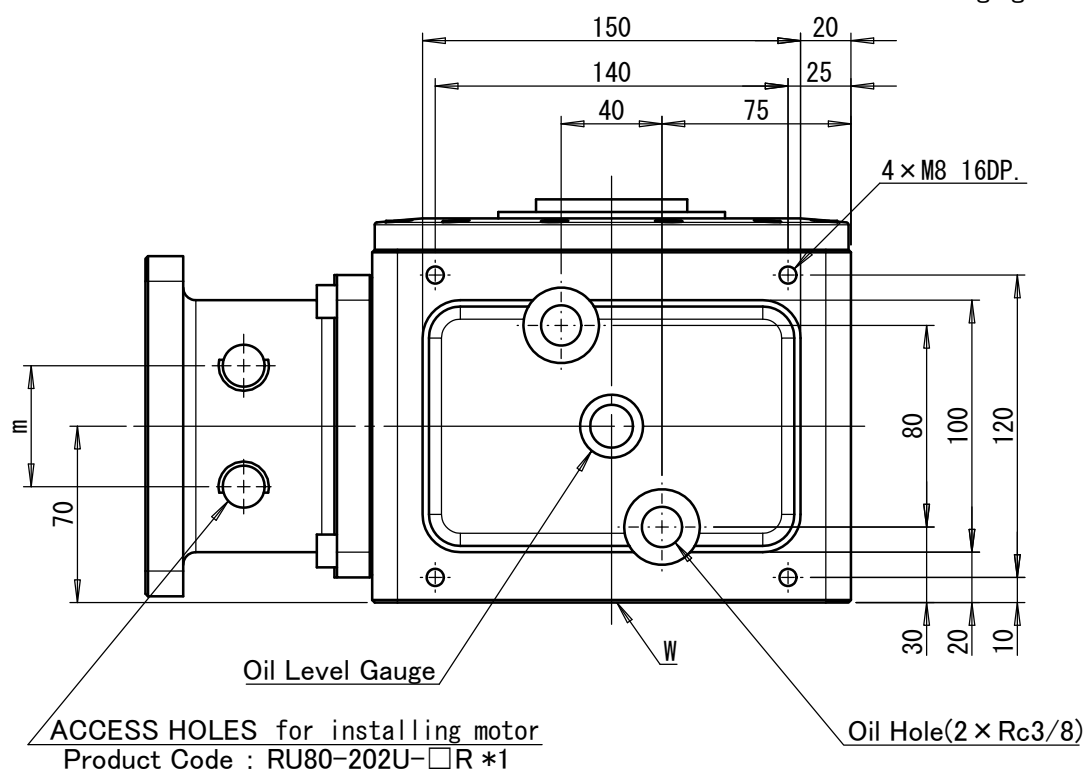
7		8			10				11				12			13	
Product Code		a	b	c	d	Dimensions				h	j	k	l	m	n	Inertia(kg·m ²)*2	Maximum Motor Torque (N·m)*3
						e	f	g									
RU80-202U-AV	RU80-202U-AV-A	10	65	80	5	16.7	32~34	100	4×M6 9DP.	254.5	64.5	95	32	39.8	3.52×10 ⁻⁴	16.66	
RU80-202U-AW	RU80-202U-AW-A	10	65	80	5	16.7	32~34	100	4×M6 9DP.	254.5	64.5	95	32	39.8	3.52×10 ⁻⁴	16.66	
RU80-202U-AR	RU80-202U-AR-A	10	65	80	5	16.7	32~34	100	4×M6 9DP.	254.5	64.5	95	32	39.8	3.52×10 ⁻⁴	16.66	
RU80-202U-AS	RU80-202U-AS-A	10	65	80	5	16.7	32~34	100	4×M6 9DP.	254.5	64.5	95	32	39.8	3.52×10 ⁻⁴	16.66	
RU80-202U-BV	RU80-202U-BV-A	14	65	80	5	16.7	32~34	100	4×M6 9DP.	254.5	64.5	95	32	39.8	3.52×10 ⁻⁴	16.66	
RU80-202U-BW	RU80-202U-BW-A	14	65	80	5	16.7	32~34	100	4×M6 9DP.	254.5	64.5	95	32	39.8	3.52×10 ⁻⁴	16.66	
RU80-202U-BR	RU80-202U-BR-A	14	65	80	5	16.7	32~34	100	4×M6 9DP.	254.5	64.5	95	32	39.8	3.52×10 ⁻⁴	16.66	
RU80-202U-BS	RU80-202U-BS-A	14	65	80	5	16.7	32~34	100	4×M6 9DP.	254.5	64.5	95	32	39.8	3.52×10 ⁻⁴	16.66	
RU80-202U-CV	RU80-202U-CV-A	14	65	80	6	20.2	36.5~37.5	100	4×M6 13DP.	258	68	95	32	39.8	3.52×10 ⁻⁴	16.66	
RU80-202U-CW	RU80-202U-CW-A	14	65	80	6	20.2	36.5~37.5	100	4×M6 13DP.	258	68	95	32	39.8	3.52×10 ⁻⁴	16.66	
RU80-202U-CR	RU80-202U-CR-A	14	65	80	6	20.2	36.5~37.5	100	4×M6 13DP.	258	68	95	32	39.8	3.52×10 ⁻⁴	16.66	
RU80-202U-CS	RU80-202U-CS-A	14	65	80	6	20.2	36.5~37.5	100	4×M6 13DP.	258	68	95	32	39.8	3.52×10 ⁻⁴	16.66	
RU80-202U-DV	RU80-202U-DV-A	16	65	80	6	24.2	40~41.5	100	4×M6 17DP.	262	72	95	32	39.8	3.52×10 ⁻⁴	16.66	
RU80-202U-DW	RU80-202U-DW-A	16	65	80	6	24.2	40~41.5	100	4×M6 17DP.	262	72	95	32	39.8	3.52×10 ⁻⁴	16.66	
RU80-202U-DR	RU80-202U-DR-A	16	65	80	6	24.2	40~41.5	100	4×M6 17DP.	262	72	95	32	39.8	3.52×10 ⁻⁴	16.66	
RU80-202U-DS	RU80-202U-DS-A	16	65	80	6	24.2	40~41.5	100	4×M6 17DP.	262	72	95	32	39.8	3.52×10 ⁻⁴	16.66	
RU80-202U-EV	RU80-202U-EV-A	19	65	70	5	24.2	40~41.5	90	4×M6 12DP.	262	72	95	32	39.8	3.52×10 ⁻⁴	16.66	
RU80-202U-EW	RU80-202U-EW-A	19	65	70	5	24.2	40~41.5	90	4×M6 12DP.	262	72	95	32	39.8	3.52×10 ⁻⁴	16.66	
RU80-202U-ER	RU80-202U-ER-A	19	65	70	5	24.2	40~41.5	90	4×M6 12DP.	262	72	95	32	39.8	3.52×10 ⁻⁴	16.66	
RU80-202U-ES	RU80-202U-ES-A	19	65	70	5	24.2	40~41.5	90	4×M6 12DP.	262	72	95	32	39.8	3.52×10 ⁻⁴	16.66	
RU80-202U-FV	RU80-202U-FV-A	19	75	110	7	32.3	55~59.5	145	4×M8 15DP.	280	90	135	48	51	3.83×10 ⁻⁴	53.33	
RU80-202U-FW	RU80-202U-FW-A	19	75	110	7	32.3	55~59.5	145	4×M8 15DP.	280	90	135	48	51	3.83×10 ⁻⁴	53.33	
RU80-202U-FR	RU80-202U-FR-A	19	75	110	7	32.3	55~59.5	145	4×M8 15DP.	280	90	135	48	51	3.83×10 ⁻⁴	53.33	
RU80-202U-FS	RU80-202U-FS-A	19	75	110	7	32.3	55~59.5	145	4×M8 15DP.	280	90	135	48	51	3.83×10 ⁻⁴	53.33	



モータ取付部詳細図
Detail of the motor attachment




減速比 Reduction ratio	20	
静定格出力トルク Static output torque rating	360	N・m
動定格出力トルク Dynamic output torque rating	上図参照	N・m
最高出力回転数 Maximum output speed	150	min ⁻¹
定格出力回転数 Nominal output speed	50	min ⁻¹
位置決め精度 Positioning accuracy	40	arcsec以下
繰返し精度 Repeatability	±5	arcsec以下
出力軸アキシャル振れ(V面) Axial runout of output surface (V)	10	μm以下
出力軸ラジアル振れ(V面) Radial runout of output outer diameter (V)	10	μm以下
出力軸許容アキシャル荷重 Maximum axial load of output	16,500	N
出力軸許容ラジアル荷重 Maximum radial load of output	14,000	N
出力軸許容モーメント荷重 Maximum moment load of output	1,000	N・m
入出力軸回転方向 Direction of input-output shafts rotation	a-d, b-c	
製品概略質量 Weight	35	kg



Notes.

- *1 モータ軸締結用アクセスホールは製品コードに該当する箇所にて2箇所のみ加工
Only two access holes for assembling motor is specified by attachment code to be machined.
- *2 慣性モーメント(イナーシャ)はモータ軸換算値とする。(モータイナーシャは含まない)。
The moment of inertia is on motor shaft except for motor of inertia.
- *3 サーボモータは上表最大モータトルク以下で使用のこと。
Do not operate the servo motor more than specified maximum motor torque which is on above table.

Dimensions																Maximum Motor Torque (N·m)*3
Product Code		a	b	c	d	e	f	g	h	j	k	l	m	n	Inertia(kg·m ²)*2	
RU80-202U-GV	RU80-202U-GV-A	22	75	110	7	32.3	55~59.5	145	4×M8 15DP.	280	90	135	48	51	3.83×10 ⁻⁴	53.33
RU80-202U-GW	RU80-202U-GW-A	22	75	110	7	32.3	55~59.5	145	4×M8 15DP.	280	90	135	48	51	3.83×10 ⁻⁴	53.33
RU80-202U-GR	RU80-202U-GR-A	22	75	110	7	32.3	55~59.5	145	4×M8 15DP.	280	90	135	48	51	3.83×10 ⁻⁴	53.33
RU80-202U-GS	RU80-202U-GS-A	22	75	110	7	32.3	55~59.5	145	4×M8 15DP.	280	90	135	48	51	3.83×10 ⁻⁴	53.33
RU80-202U-HV	RU80-202U-HV-A	24	75	110	7	32.3	55~59.5	145	4×M8 15DP.	280	90	135	48	51	3.83×10 ⁻⁴	53.33
RU80-202U-HW	RU80-202U-HW-A	24	75	110	7	32.3	55~59.5	145	4×M8 15DP.	280	90	135	48	51	3.83×10 ⁻⁴	53.33
RU80-202U-HR	RU80-202U-HR-A	24	75	110	7	32.3	55~59.5	145	4×M8 15DP.	280	90	135	48	51	3.83×10 ⁻⁴	53.33
RU80-202U-HS	RU80-202U-HS-A	24	75	110	7	32.3	55~59.5	145	4×M8 15DP.	280	90	135	48	51	3.83×10 ⁻⁴	53.33
RU80-202U-JV	RU80-202U-JV-A	16	65	80	6	20.2	36.5~37.5	100	4×M6 13DP.	258	68	95	32	39.8	3.52×10 ⁻⁴	16.66
RU80-202U-JW	RU80-202U-JW-A	16	65	80	6	20.2	36.5~37.5	100	4×M6 13DP.	258	68	95	32	39.8	3.52×10 ⁻⁴	16.66
RU80-202U-JR	RU80-202U-JR-A	16	65	80	6	20.2	36.5~37.5	100	4×M6 13DP.	258	68	95	32	39.8	3.52×10 ⁻⁴	16.66
RU80-202U-JS	RU80-202U-JS-A	16	65	80	6	20.2	36.5~37.5	100	4×M6 13DP.	258	68	95	32	39.8	3.52×10 ⁻⁴	16.66
RU80-202U-KV	RU80-202U-KV-A	16	65	70	5	24.2	40~41.5	90	4×M6 12DP.	262	72	95	32	39.8	3.52×10 ⁻⁴	16.66
RU80-202U-KW	RU80-202U-KW-A	16	65	70	5	24.2	40~41.5	90	4×M6 12DP.	262	72	95	32	39.8	3.52×10 ⁻⁴	16.66
RU80-202U-KR	RU80-202U-KR-A	16	65	70	5	24.2	40~41.5	90	4×M6 12DP.	262	72	95	32	39.8	3.52×10 ⁻⁴	16.66
RU80-202U-KS	RU80-202U-KS-A	16	65	70	5	24.2	40~41.5	90	4×M6 12DP.	262	72	95	32	39.8	3.52×10 ⁻⁴	16.66

		Scale 1:3	Date 08/Dec/2015
Designer K. Katsumata		Checker H. Takayama	
Draftsman K. Koike		Assent K. Iida	

3			
2			
1			
Correction		Sign	Date
Model	<i>RollerDrive</i> RU80-202U		CERTIFIED PRINT
Draw.No.			
RU0801K3192-000			