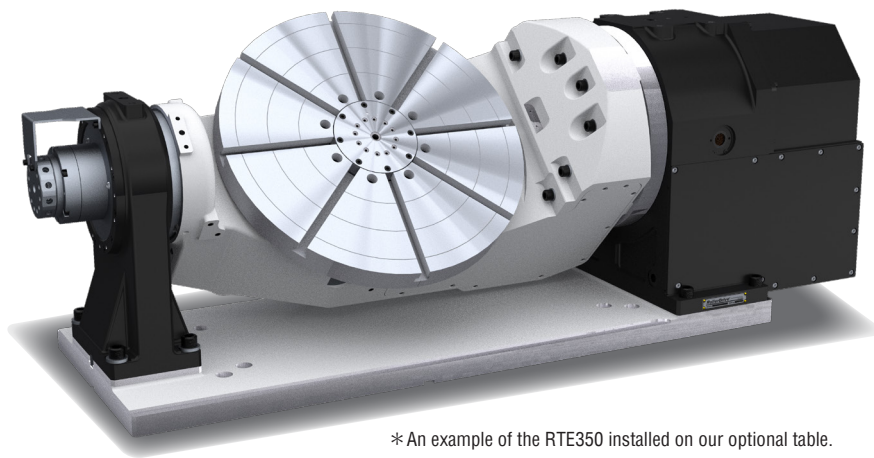


Equipped with rotary joint, 12+1 ports, for automation.

RollerDrive[®] RTE350

Contributes to improve productivity in machining large workpieces
Tilting rotary table that can accommodate automated jigs



*An example of the RTE350 installed on our optional table.

RollerDrive mechanism

- Maintenance free
- High-precision composite machining

Wide processing range

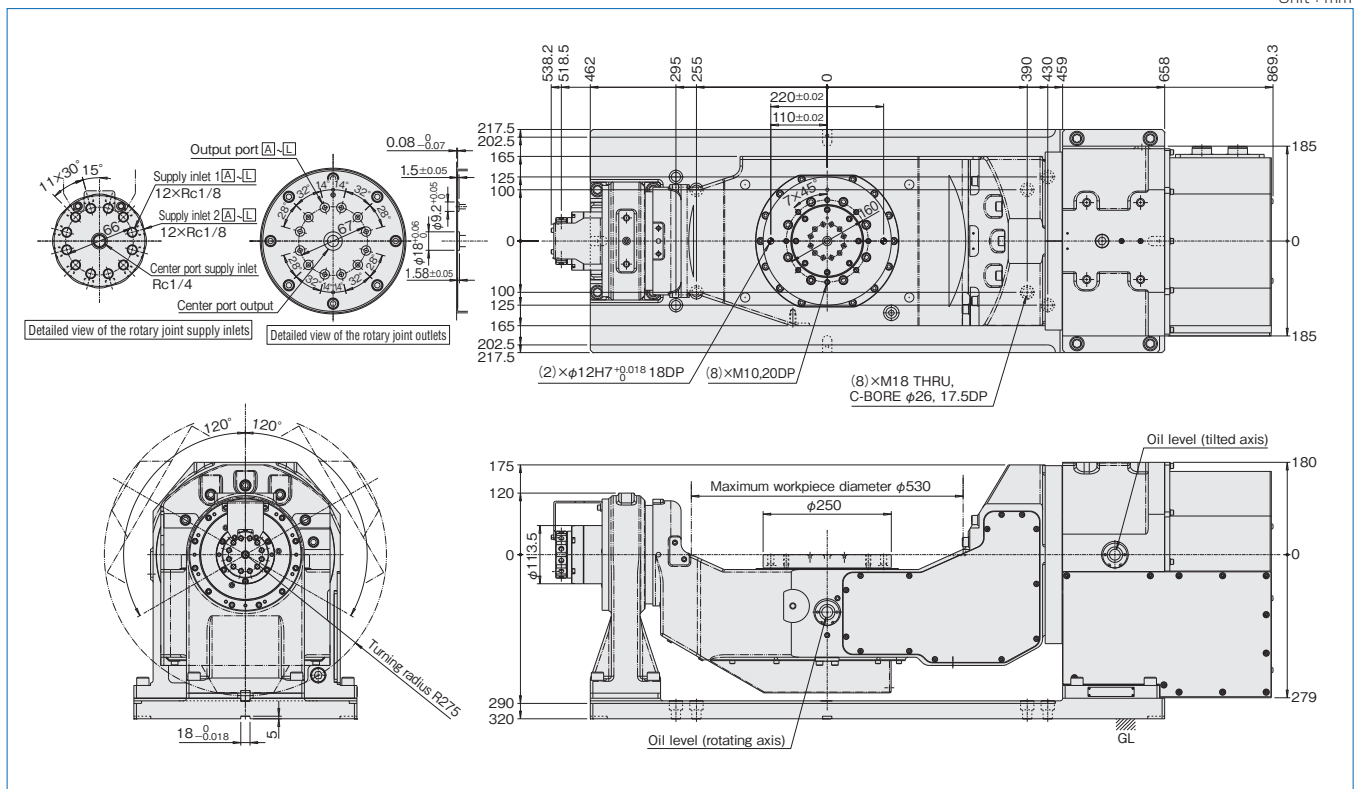
- Max. workpiece diameter, ϕ 530
- Rotating table surface is aligned with the tilting axis center

Designed for automation

- Includes a rotary joint up to 12+1 ports

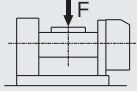
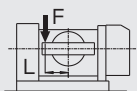
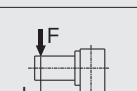
Dimensions

Unit : mm





Specifications

	Unit	RTE350	
		Rotary axis	Tilt axis
Operating range	deg	–	±120
Max. workpiece diameter	mm	φ530	
Table diameter	mm	φ250	
Gear ratio	–	60	96
Motor model	–	αiS8/4000-B (A06B-2235-B100)	αiS8/4000-B (A06B-2235-B400)
Maximum speed	min ⁻¹	50	40
Continuous holding torque	N·m	432	691
Clamp torque	N·m	1100	1850
Indexing accuracy	arc.sec	±10	±30
Repeat accuracy	arc.sec	4	4
Net weight	kg	700	
Allowable payload	kg	290	
Maximum eccentric load torque	N·m	562	
Maximum inertia	kg·m ²	9.93	
Maximum load while clamping a table		N	29400
		N·m	1100
		N·m	1850
Rotary joint	–	12+1 (Center through-hole)	
Optional table*	mm	φ500 (T-slot 14 mm width)	
90° indexing time (when the workpiece inertia is 9.93 kg·m ²), reference time	sec	0.5	0.575

*The table surface and the tilting axis center are automatically offset.