

An indexing/skewing drive system for rotating the motor cores used for electric motors in home electrical appliances.

# Servo-dex EVR2 Series

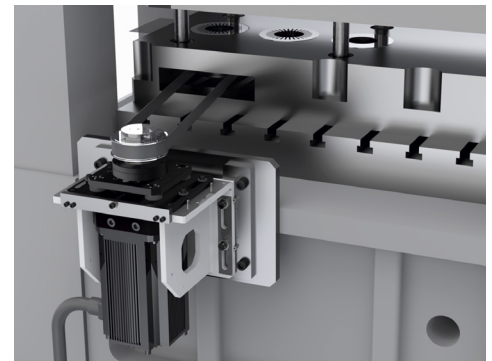
The Servo-dex EVR2 series is an indexing/skewing drive system for rotating the electric motor cores used in home appliances. It is optimal for electric motor core production press lines that make motors for home appliances, such as air conditioners and general-purpose motors.

It reduces mold maintenance by suppressing vibration when stopping a workpiece with high-precision positioning. This series can easily be controlled using a timing signal, and various control patterns are now also available.



## Features

- General-purpose models providing basic performance at a low cost
- Supports optional stacking angle settings and various types of control patterns
  - Stacking operation triggered by the timing signal
- Its high precision positioning increases mold life.
- The combination of a servo driven feeder and a servodex device results in
  - maximum motor core line optimization



## Specification table

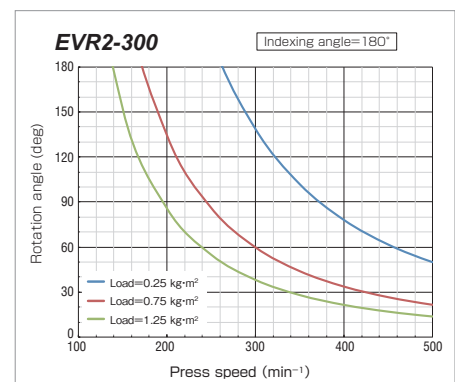
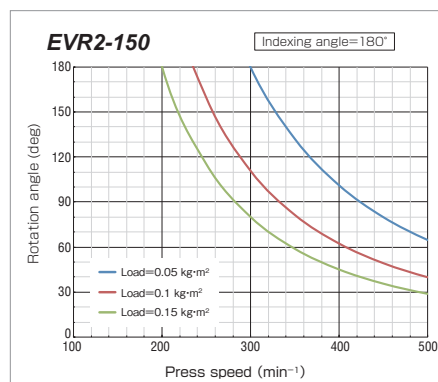
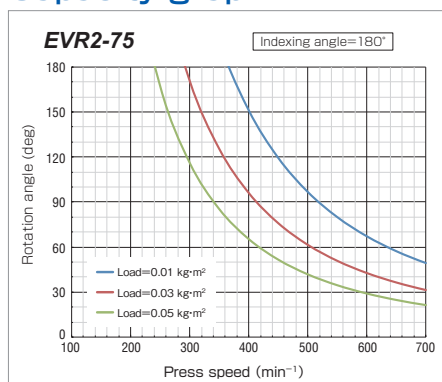
Item	Unit	EVR2-75	EVR2-150	EVR2-300
Rated torque	N·m	48	95	358
Maximum torque	N·m	119	224	752
Rated rpm	rpm	1500	1500	800
Load inertia(max) <sup>※2</sup>	kg·m <sup>2</sup>	0.05	0.15	1.25
Indexing angle	deg		Any angle	
Permitted axial load	deg		Any angle	
Permitted axial load <sup>※3</sup>	N		100	
Permitted radial load <sup>※4</sup> ※5	N	2,000	3,000	4,000
Motor capacity	Kw	7.5	15	30
Product weight	kg	125	217	445

※1 Indicates the accuracy of a single unit. It does not include the residual vibration that occurs when using a timing belt.

※2 The capacity changes, depending on the speed ratio and the load being handled. ※3 Represents the weight of the load.

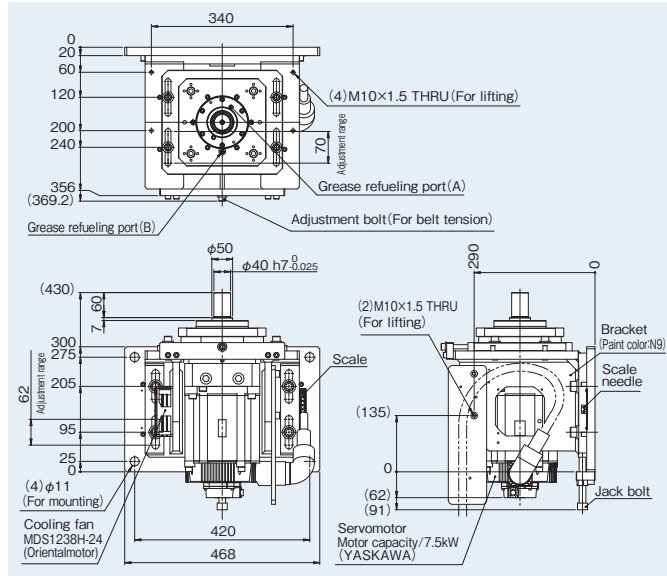
※4 Represents the load applied to the center height of the output shaft. ※5 Use a timing belt that has a low elastic deformation to suppress residual vibration.

## Capacity graph



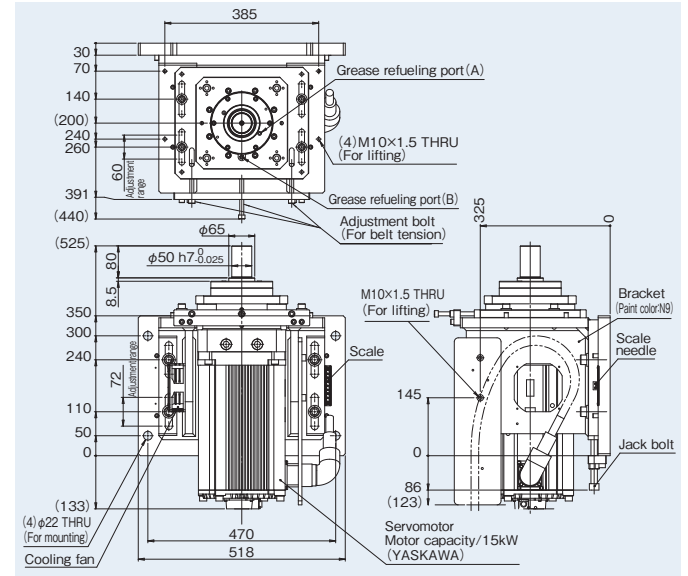
# Dimensional drawing

## EVR2-75

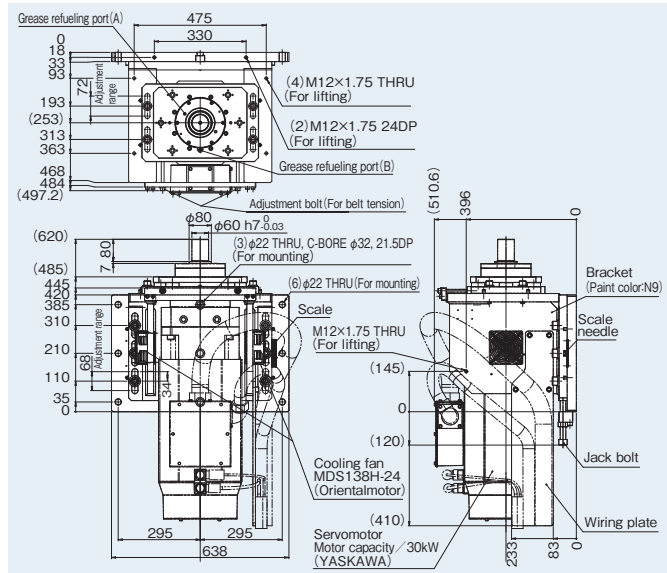


## EVR2-150

[Unit:mm]



## EVR2-300



## Control panel

